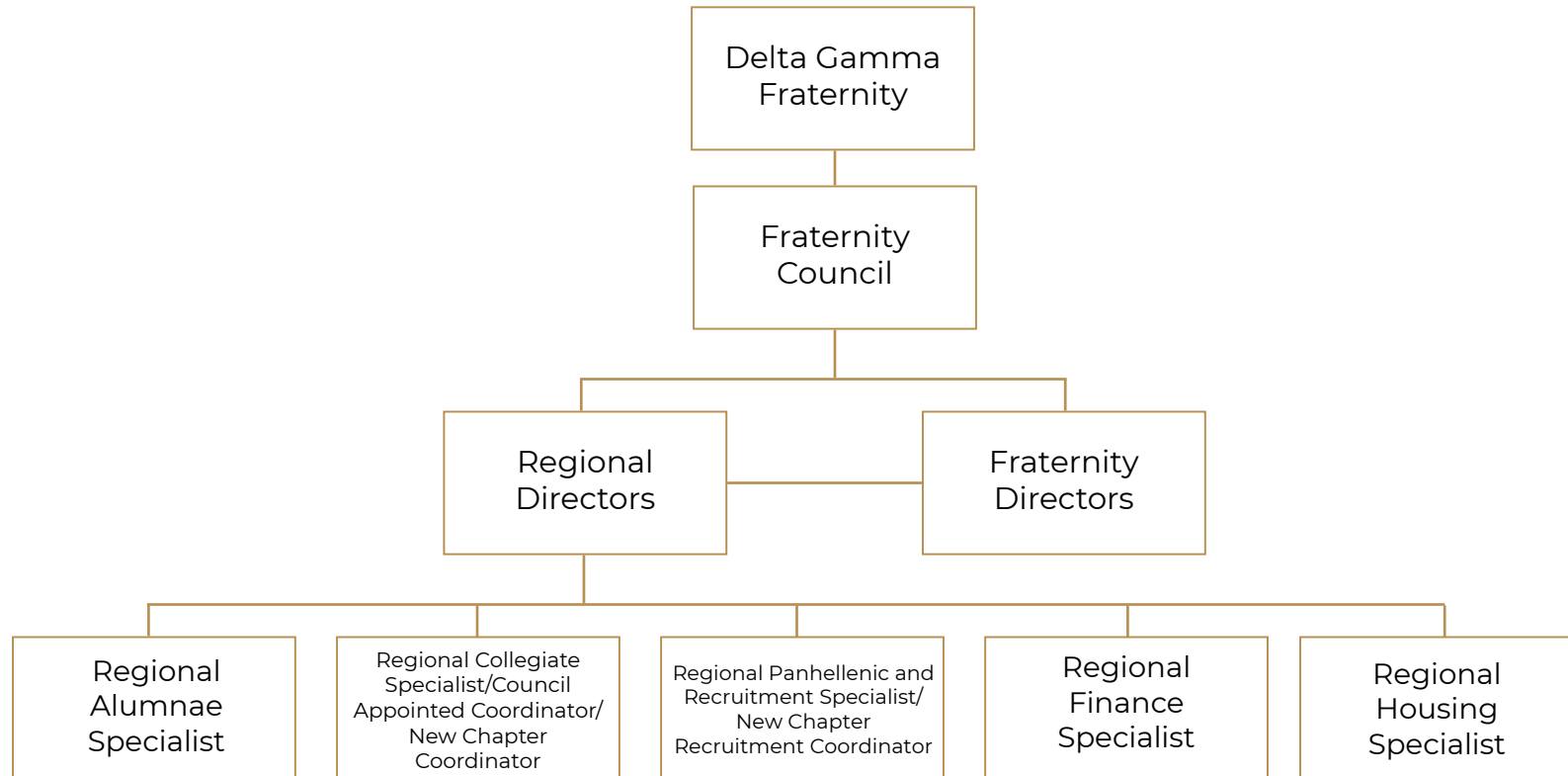




## Fraternity Leadership Volunteer Email Flow Chart

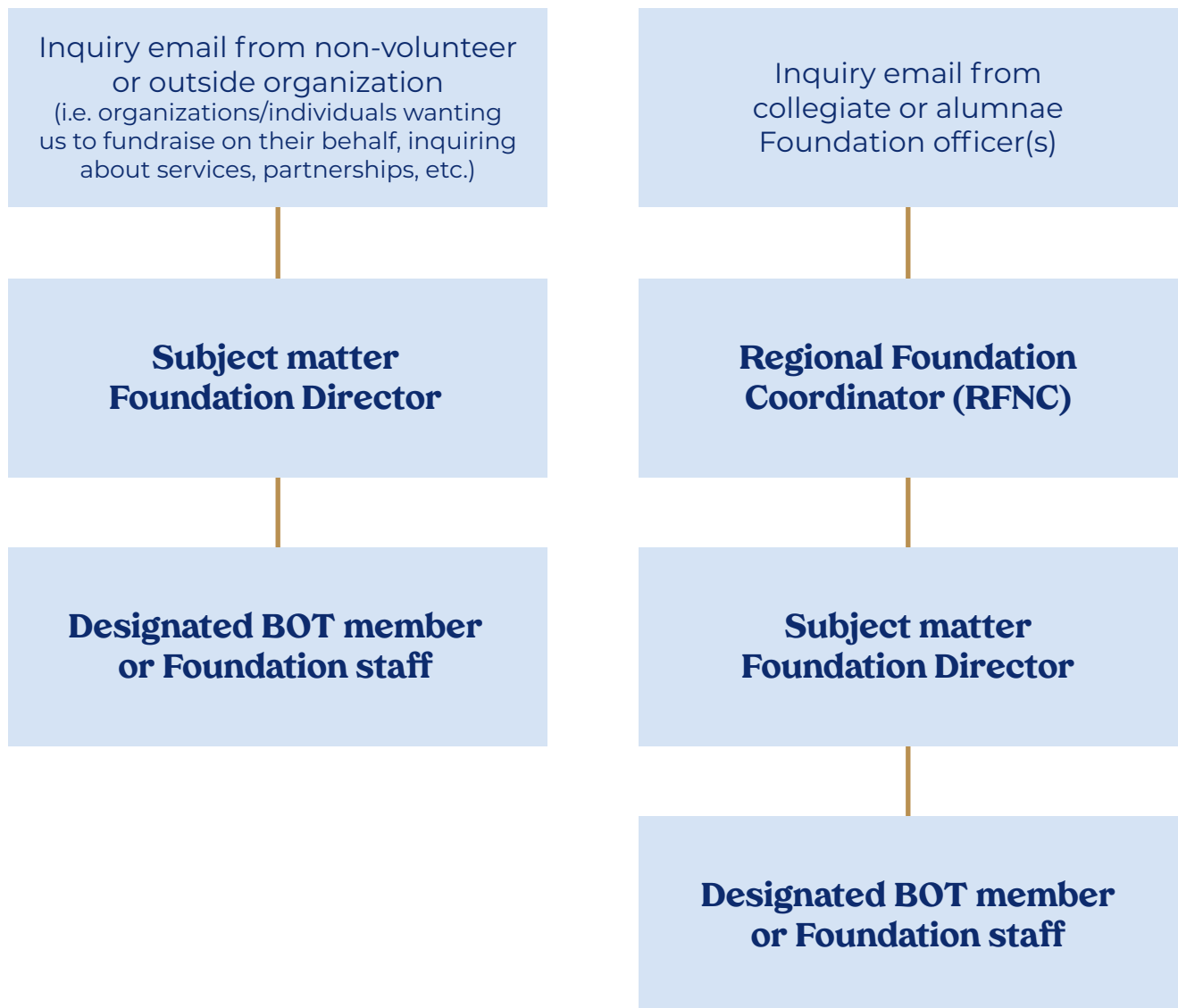
- If you serve on a regional team, your first stop for questions should be your Regional Director (RD).
  - For Regional Panhellenic and Recruitment Specialist (RPRS), your first stop for questions is both your RD and the Director: Panhellenic Development. Please include both volunteers on your email.
  - For New Chapter Recruitment Coordinators (NCRCs), your first stop for questions is both your RD and the Director: Extension. Please include both volunteers on your email.
- If your RD does not have the answers, they will connect you with a Fraternity Director, and if the Fraternity Director cannot answer the question, they will reach out to Fraternity Council and/or EO staff.



- If in a crisis or potential crisis, email [crisis@deltagamma.org](mailto:crisis@deltagamma.org), and follow the [Crisis Communication Plan](#) and/or the [Tragedy Response Procedures](#).



## Delta Gamma Foundation Volunteer Email Flow



If in a crisis or potential crisis, follow the [crisis communication procedures](#).