



# Delta Gamma

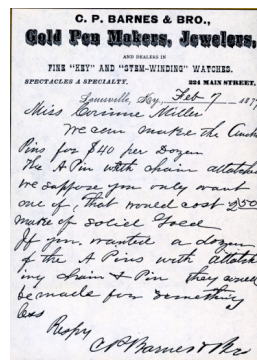
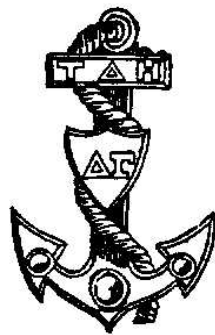
1873

## The Delta Gamma Badge Through History

**1873** | Soon after the first Initiation, plans were made for a pin. In a letter written shortly before her death, **Mary Comfort Leonard** described that first pin: “We went to a local jeweler and had our pin made - the letter “H” which stood for hope, for we hoped great results and have not been disappointed...” And so, the first badge of Delta Gamma was the gold pin in the shape of the letter H with the Greek letters ΔΓ on the crossbar.

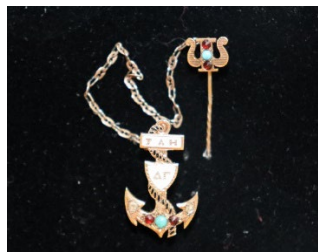


**1877** | The first anchor badge was designed by **Corinne Miller, Psi-Lewis**. Corinne, an 1876 initiate, negotiated with C.P. Barnes & Company, a Louisville, Kentucky, firm to have the first group made. As the age-old symbol of hope, the anchor served as the perfect symbol for Delta Gamma. The design was of a golden anchor badge bearing the letters TΔH and ΔΓ, along with the symbolic white shield and cable. These vintage badges were larger than the design of today and were as varied as members chose them to be. The badges were worn various places, usually on or near the collar.



*Corinne Miller's anchor badge design, sketched for the ANCHORA by her niece, Kathryn Harper.*

The oldest badge in the archives belonged to **Emma Wohlleben Sultan**, an 1876 initiate of **Psi-Lewis**. This badge is from the first batch of new anchor badges made in 1877 by C.P. Barnes Jewelers. The first run of badges cost \$40 per dozen.



*This badge, which belonged to Emma Wohlleben Sultan, is the oldest badge currently in Delta Gamma's archives.*

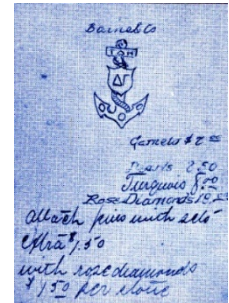




# Delta Gamma

1873

**1881** | The first and succeeding Conventions approved official jewelers in various cities so designs varied. Precious gems were not restricted to pearls and diamonds as they are now. Thus, we find considerable variance in styles of the old, larger badges. Pins were usually worn on the collar until around 1900 when the “over the heart” custom was adopted. The drawing shown here was issued to authorized jewelers to produce the badge.



Here are a few images of vintage badges showcasing the varying designs:



*These badges show variety in the cable, fonts used for the Greek alphabet letters, stone type and quantity, metal used and more. Keep reading to view our current badge design and see how much this has evolved.*

**1905** | In 1905 a uniform badge design, smaller than earlier ones, was adopted by the 14<sup>th</sup> Delta Gamma Convention body. This vote also restricted the gems on the badges to diamonds and pearls only.

**1913** | The 18<sup>th</sup> Convention approved the universal practice of engraving each badge with the name and chapter of the new member.

**1919** | The 20<sup>th</sup> Convention decided that a single official jeweler would supply all badges.





# Delta Gamma

1873

**1949** | In celebration of the Fraternity's Diamond Jubilee (75 years) the present-day Council badge which includes diamonds, and five emeralds was adopted at the Convention of 1948, held in Swampscott, Massachusetts. The diamond at the top of the anchor marking the 75<sup>th</sup> anniversary and the five emeralds represented the then-five members of Council.



**1966** | A badge would no longer be included in the initiation fee. Instead, each member would have the option of purchasing the badge of their choice.

**2014** | The Foundation Board of Trustees badge was created and given to volunteers who have served in that capacity.



*This design reflects the Foundation Board of Trustees badge and pendant, which is signified with the use of sapphires.*

**2021** | The design below reflects our current badge, a symbol recognizable by all modern-day Delta Gammas.



*This image shows Delta Gamma's current badge design, still used in 2021 for members. Embellishments are available to those who wish to incorporate stones.*

